

CROSSING THE LINE OF CONTACT

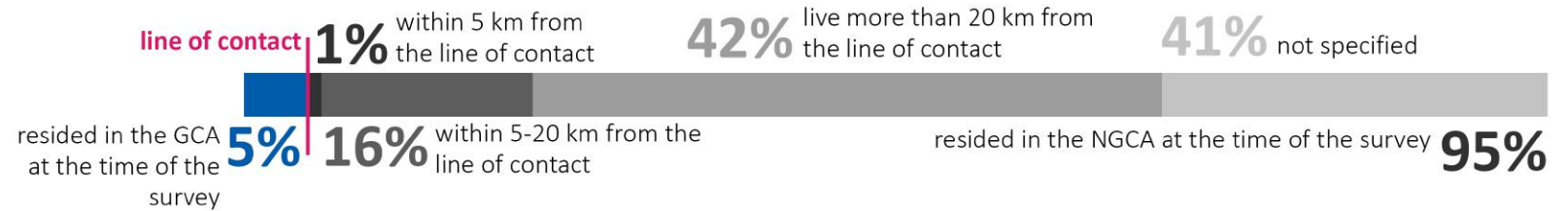
January 2019

4 fatalities took place on the GCA side of Stanytsia Luhanska EECP

 Slippery roads caused injuries on different EECPs

 The ongoing reconstruction was continuously causing inconveniences at Hnutove and Maiorske EECPs

DEMOGRAPHICS



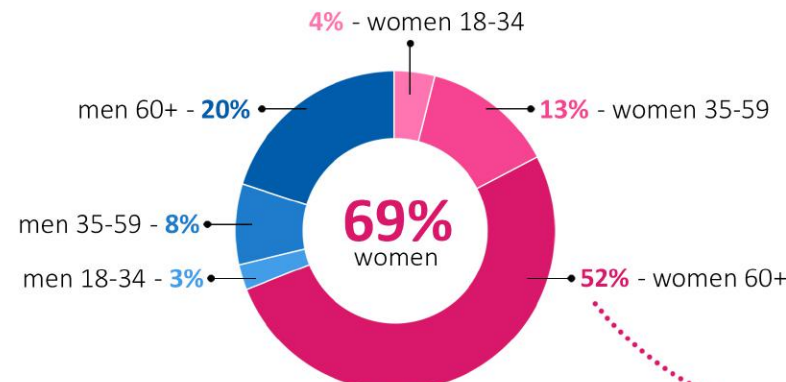
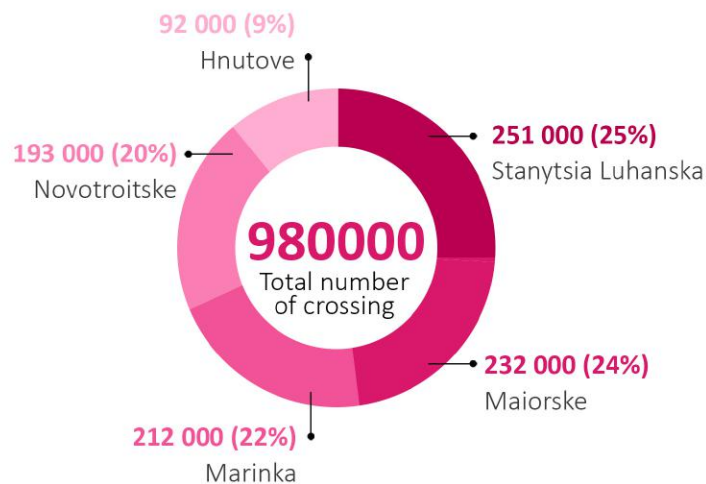
NUMBER OF CROSSINGS


General statistics on crossings are available at the UNHCR dashboard visualizing data from the State Border Guard Service – <https://goo.gl/TZbU8c>

 **2099** individuals were surveyed by R2P monitors in January

 **75%** of all respondents are crossing the line of contact once in 2 months

 **6%** of all respondents were travelling with children



 **72%** of all respondents were over 60 years old

 **1087** women over 60 years old constituted the largest group

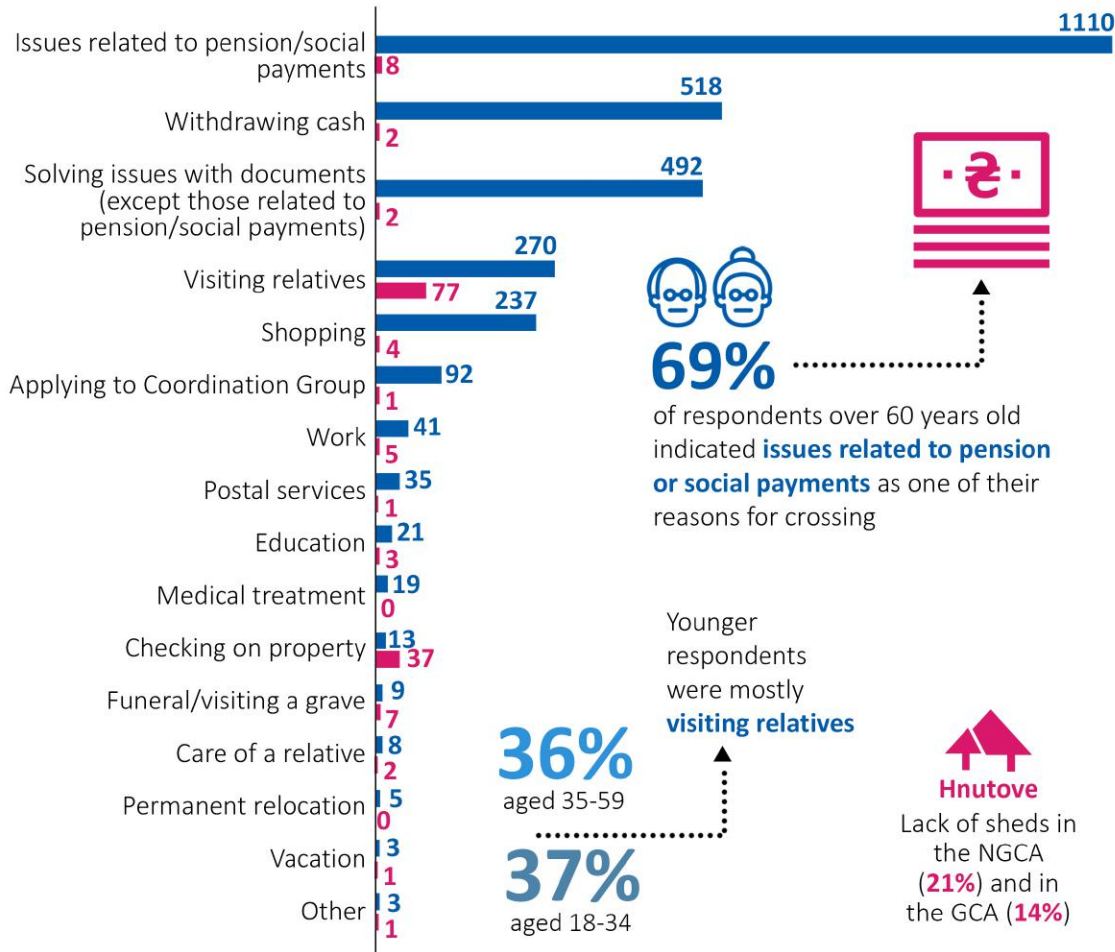
CROSSING THE LINE OF CONTACT

January 2019

REASONS FOR CROSSING

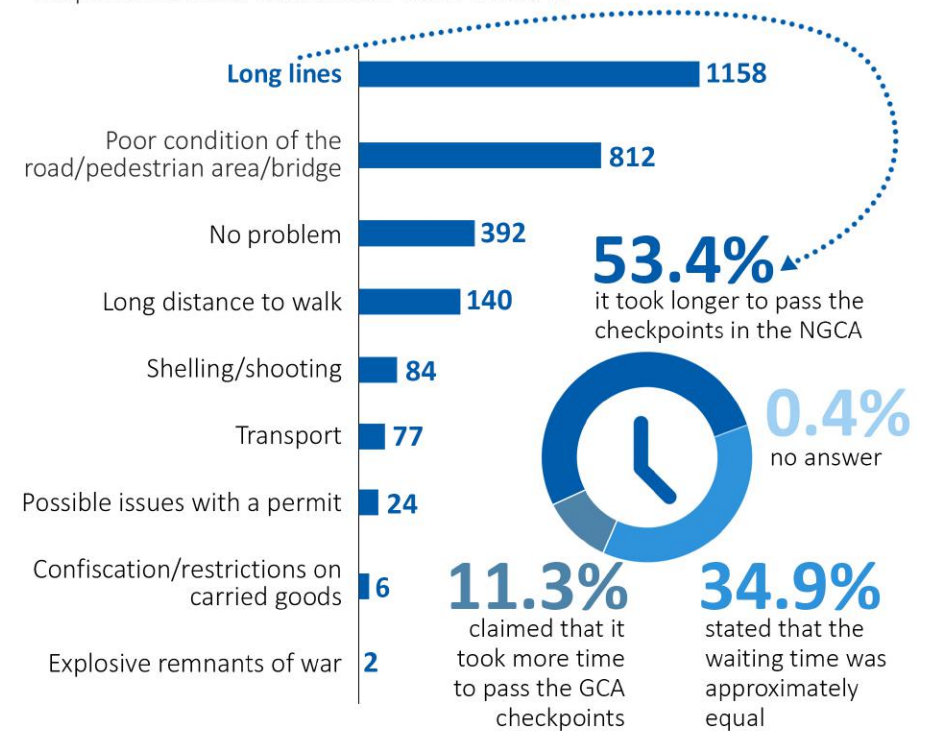
Respondents could indicate 1 or more reasons

■ NGCA residents ■ GCA residents



CONCERNS WHILE CROSSING

Respondents could indicate 1 or more concerns



64% of all respondents mentioned some concerns with waiting conditions

Hnutove
Lack of sheds in the NGCA (**21%**) and in the GCA (**14%**)

Novotroitske
Lack of sheds at "zero" checkpoint (**33%**), in the GCA (**29%**) and in the NGCA (**28%**)

Maiorske
Lack of sheds in the GCA (**68%**), in the NGCA (**55%**) and "zero" checkpoint (**45%**). In the GCA it is mostly related to the ongoing reconstruction

Stanytsia Luhanska
Lack or poor condition of toilets/latrines at "zero" checkpoint (**95%**) and in the GCA

Marinka
Lack of sheds in the NGCA (**30%**), "zero" checkpoint (**28%**) and the GCA (**16%**)